

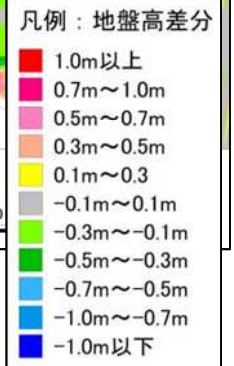
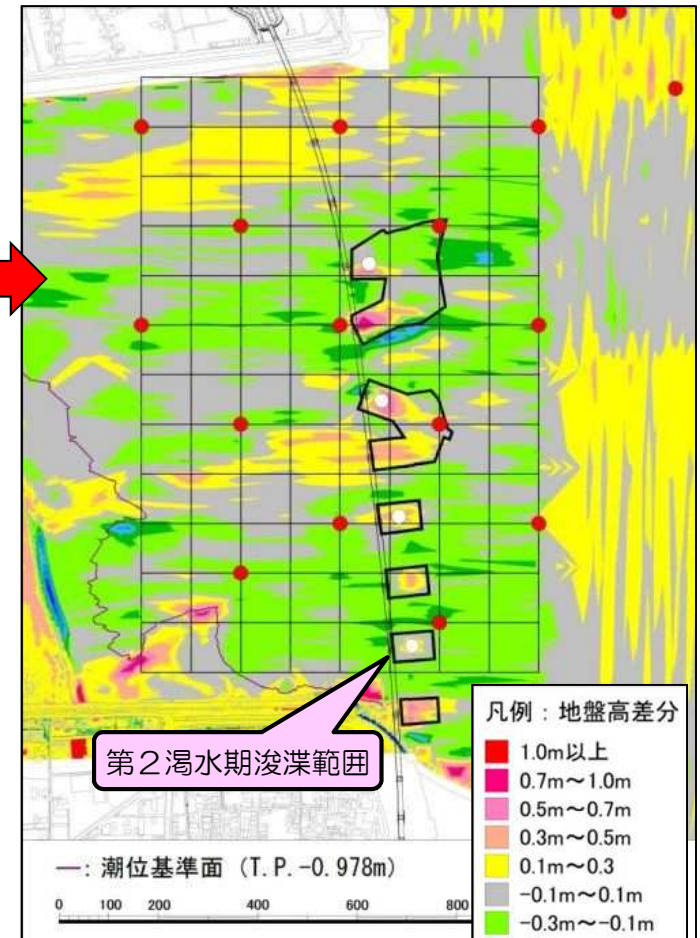
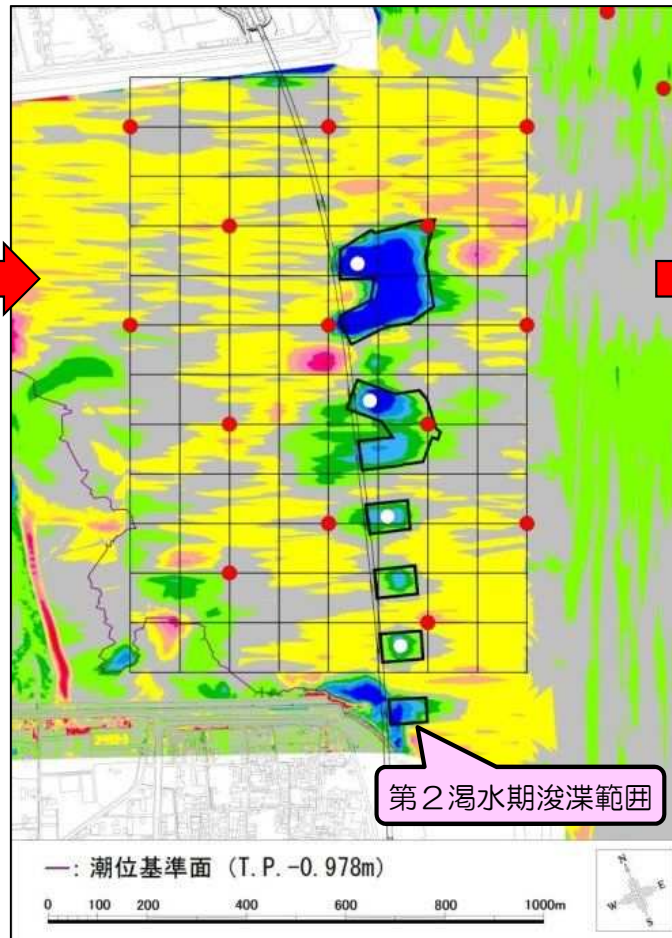
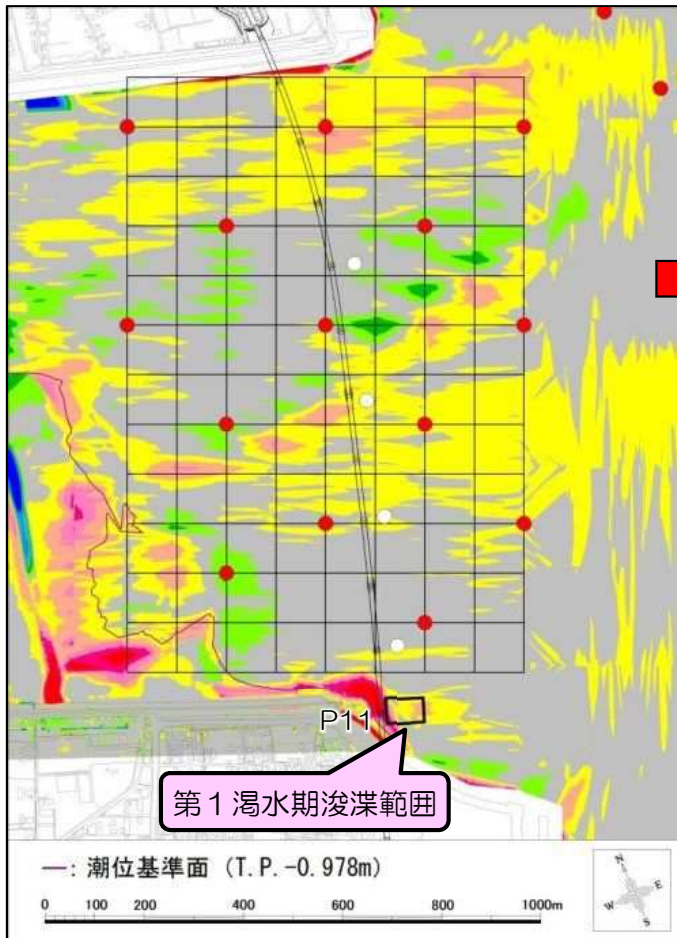
■環境モニタリング調査結果(地形差分図と浚渫範囲)

工事中

H28.6→H28.10 (出水期)

H28.10→H29.6 (湧水期)

H29.6→H29.10 (出水期)



● 潮下帯生物調査 調査地点

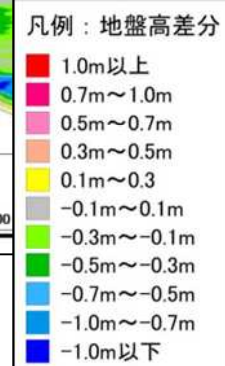
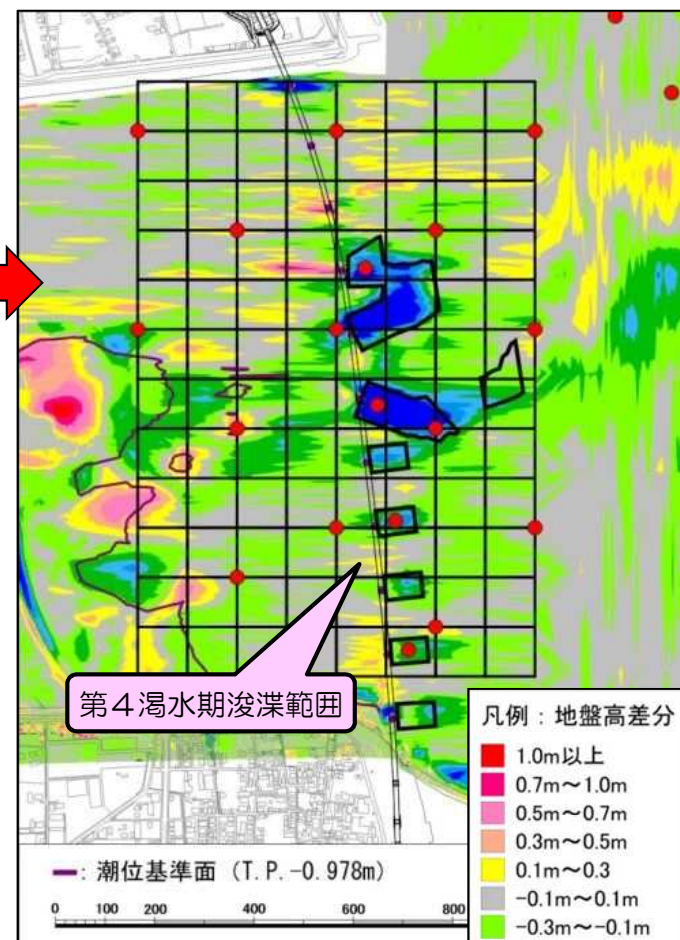
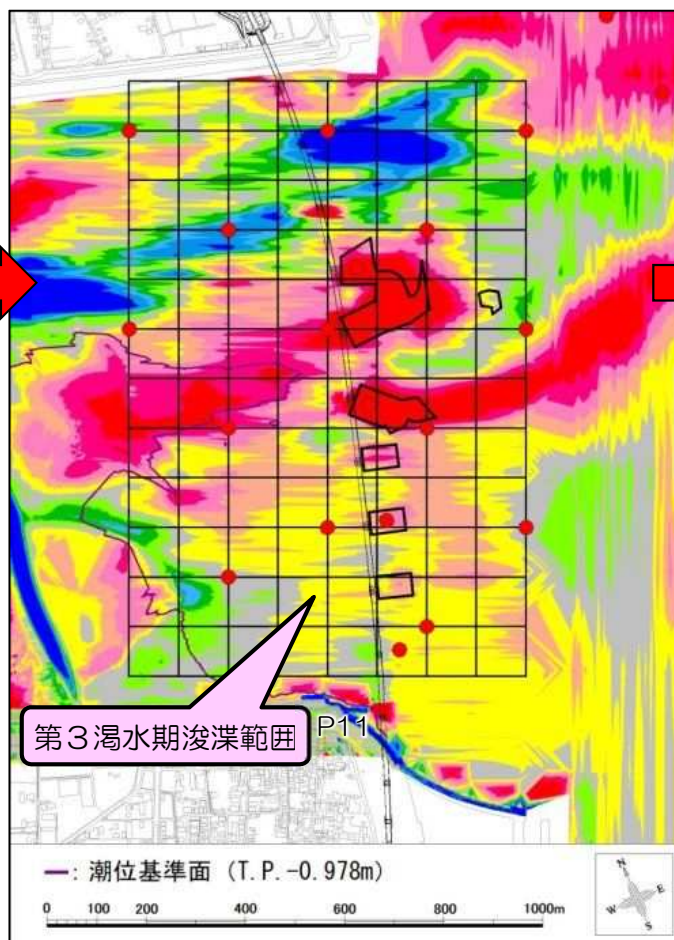
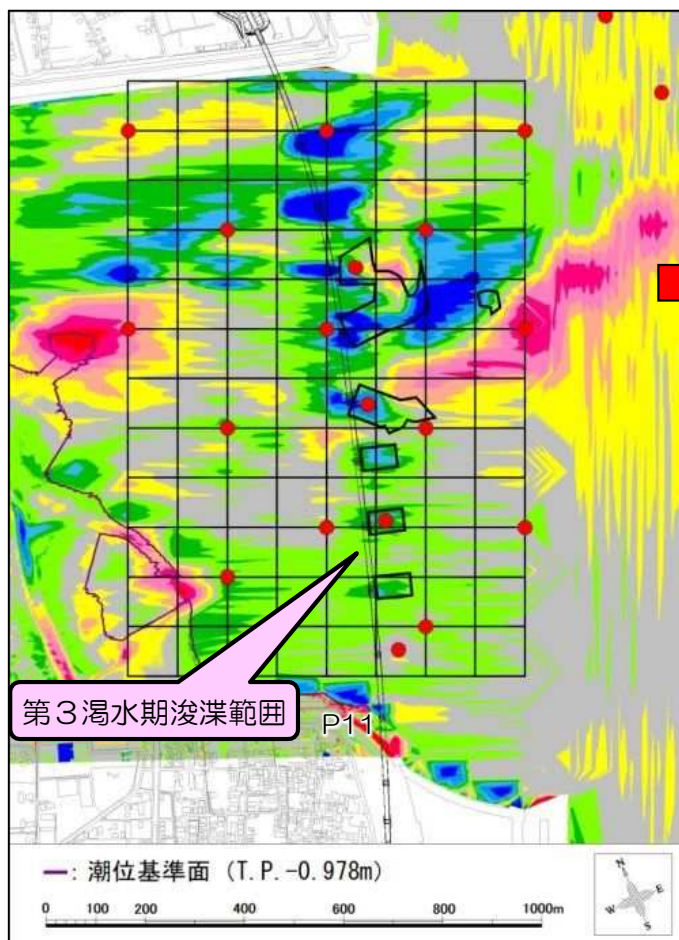
■環境モニタリング調査結果(地形差分図と浚渫範囲)

工事中

H29.10→H30.6 (湧水期)

H30.6→H30.10 (出水期)

H30.10→R1.6 (湧水期)



● 潮下帯生物調査 調査地点

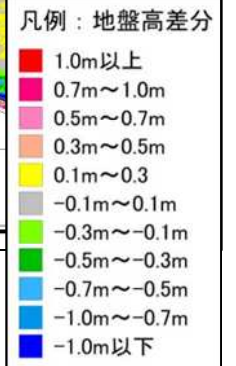
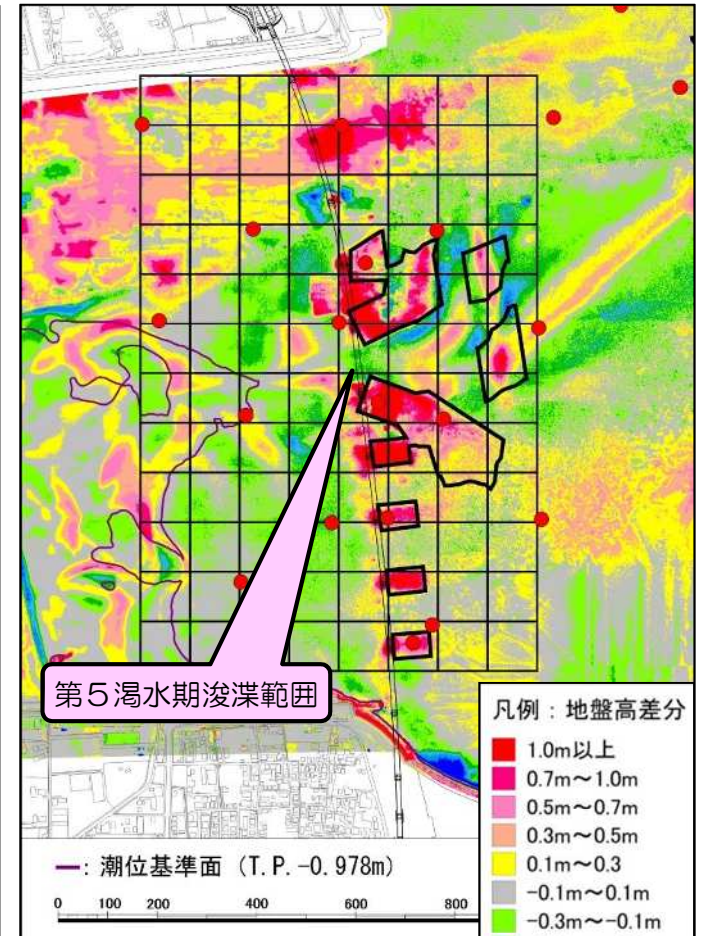
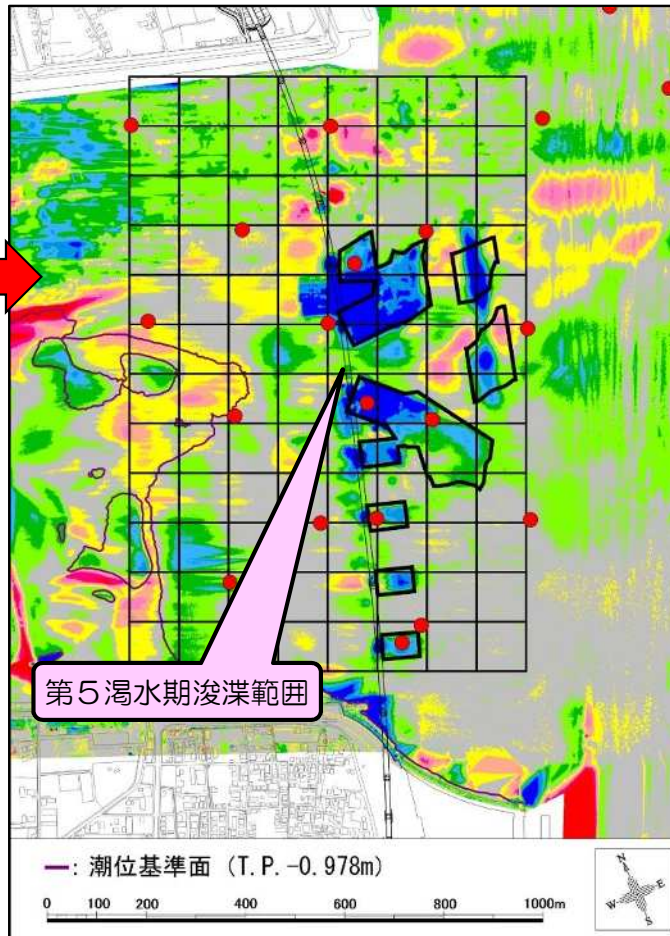
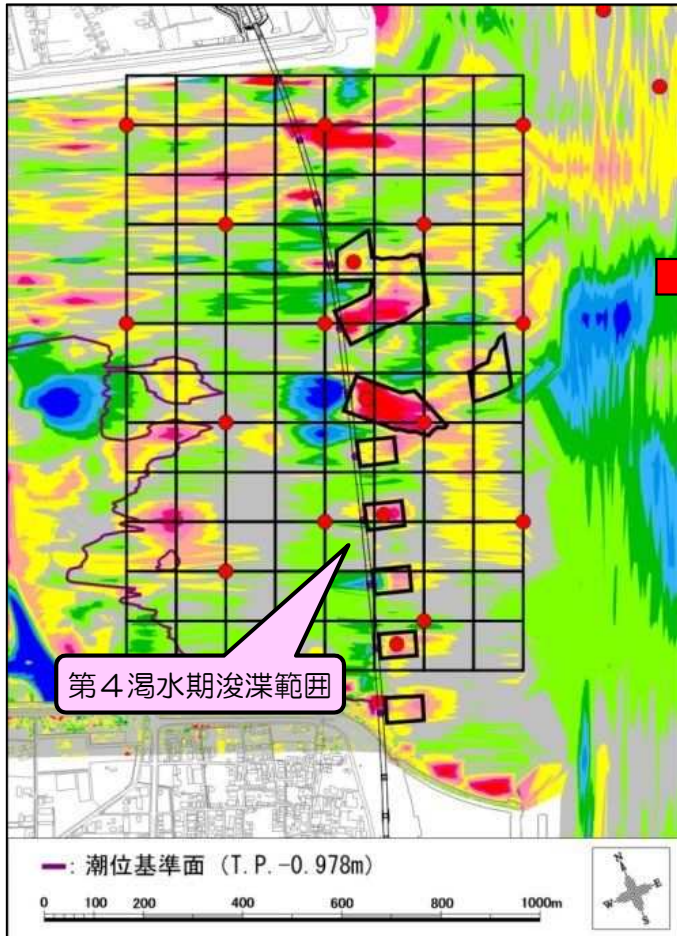
■環境モニタリング調査結果(地形差分図と浚渫範囲)

工事中

R1.6→R1.10 (出水期)

R1.10→R2.6 (湧水期)

R2.6→R2.10 (出水期)



● 潮下帯生物調査 調査地点

■環境モニタリング調査結果(地形差分図と浚渫範囲)



工事中

R2.10→R3.6 (湧水期)

R3.6→R3.10 (出水期)

R3.6→R3.10 (出水期) ※仮設桁撤去

